

RalB

Catalog Number: 10169

Synonyms: v-ral simian leukemia viral oncogene homolog B

Background: The Ras-like small G proteins, RalA/B, are important components of Ras signaling pathways, implicated in the initiation and maintenance of tumorigenic transformation, as well as vesicle transport, apoptosis, transcription, cell migration, and cell proliferation.

Amino Acid Sequence: (1-206)

MAANKSKGQSSLALHKVIMVVGSGGVGKSALTQLQ
MYDEFVEDYEPTKADSYRKKVVLDGEEVQIDILD
TAGQEDYAAIRDNYFRSGEGFLLVFSITEHESFTAT
AEFREQLRVKAEEDKIPLL VVGNKSDLEERRQVP
VEEARSKAEWGVQYVETSAKTRANV DKVFFDL
MREIRTKKMSENKDKNGKKSSKNKKSFKERCCL
L

Source: Human, recombinant full length, His6-tag

Expression Host: E. coli

Molecular Weight: 23 kDa

Purity: > 99% by SDS-PAGE

Constituents: 20 mM Tris-HCl, pH 8.0, 150 mM NaCl.

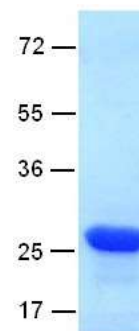
Physical Appearance: White or clear

Concentration: 1 mg/mL

Storage: -80°C

Preparation Instructions

Adding of 10 mM β -mercaptoethanol or 1 mM DTT into the solution to protect the protein is recommended and using of non-ionic detergents such as n-Dodecyl β -D-maltoside (DoDM) or polyethylene detergents (e.g. C₁₂E₁₀) also help to stabilize the protein. Avoid repeated freezing and thawing.



The purity of His-tagged RalB was determined by SDS-PAGE and Coomassie Brilliant Blue Staining.

References

1. Chien, Y. et al., Cell 127: 157-170, 2006.
2. Hsieh, C.-L. et al., Somat. Cell Molec. Genet. 16: 407-410, 1990

FOR RESEARCH USE ONLY. NOT FOR DIAGNOSTIC APPLICATIONS